

# Yap Jack Pro II™

## Version 2.0.0



## Quick Start Guide

# Table of Contents

- Welcome ..... 1
  - System Requirements* ..... 1
- Setting Up Your Yap Jack Pro II ..... 2
  - Standalone Mode* ..... 2
    - CONNECTING THE YAP JACK PRO II FOR STANDALONE MODE ..... 2
    - SETTING THE YAP JACK PRO II TO STANDALONE MODE ..... 3
  - Serial Printer Mode* ..... 3
    - CONNECTING THE YAP JACK PRO II FOR SERIAL PRINTER MODE ..... 4
    - SETTING THE YAP JACK PRO II TO SERIAL PRINTER MODE ..... 5
      - Serial Printer Mode* ..... 5
      - Time Zone* ..... 5
      - Daylight Savings Time* ..... 6
      - Company Name* ..... 7
      - Markup Percentage* ..... 7
  - Reverse Polarity Billing Machine Mode* ..... 8
    - CONNECTING THE YAP JACK PRO II FOR REVERSE POLARITY MODE ..... 8
    - SETTING THE YAP JACK PRO II TO REVERSE POLARITY MODE ..... 9
  - PCO Machine Mode* ..... 10
    - CONNECTING THE YAP JACK PRO II FOR PCO MACHINE MODE ..... 10
    - SETTING THE YAP JACK PRO II TO PCO MACHINE MODE ..... 11
- Entering Account and ISP Information ..... 12
  - Entering Account Information* ..... 12
  - Entering ISP Information* ..... 13
- Checking Advanced Setup Information ..... 15
  - Using a Dialing Prefix* ..... 15
  - Disabling Call Waiting* ..... 16
  - Changing Your Telephone Dialing Mode* ..... 16
- Placing a Test Call ..... 17
- Making a Telephone Call ..... 17
  - Placing a Call to a Regular Telephone* ..... 17
- Telephone Keypad Map ..... 19
- Navigating the LCD Menu ..... 20
- Yap Jack Pro II Interface ..... 21

## Welcome

Congratulations on purchasing the Yap Jack Pro II! The Yap Jack Pro II is a dial-up voice over IP (VoIP) device intended mainly for use in Internet cafés and public call shops. Key features for these businesses include:

- ★ Customers can make inexpensive calls over the Internet using a standard analog telephone.
- ★ Internet café/call shop owners can mark up the cost of each call and output call detail to a branded call receipt from a serial printer.
- ★ The Yap Jack Pro II can send billing tones to a Public Calling Office (PCO) machine or connect to existing reverse polarity billing systems.

To use the Yap Jack Pro II, all you need is a dial-up PPP account with a local Internet service provider (ISP), a Yap Jack Pro II account, an analog telephone, local telephone service, and, depending on which mode you choose, a serial receipt printer, PCO machine, or reverse polarity billing system. If you're all set up with these items, you're ready to go!

This Quick Start Guide describes the setup procedures for the Yap Jack Pro II, version 1.0. For more detailed instructions on connecting, configuring, and using the Yap Jack Pro II, refer to the [Yap Jack Pro II Version 1.0 User's Guide](http://web.net2phone.com/partnerships/distributors/product/dialup/yapjackpro2.asp), located at the following URL:  
<http://web.net2phone.com/partnerships/distributors/product/dialup/yapjackpro2.asp>.

## System Requirements

- ★ Access to a dial-up ISP that is PPP compatible
- ★ At least one valid ISP account
- ★ A Yap Jack Pro II account number and PIN
- ★ Any conventional analog telephone
- ★ A telephone line wall jack
- ★ Local telephone company service
- ★ If outputting call detail:
  - Configurable serial receipt printer (if using a non-configurable printer, see "**Serial Printer Mode**" in the next section for the required settings), or
  - PCO machine, or
  - Reverse polarity billing system

## Setting Up Your Yap Jack Pro II

There are four possible Yap Jack Pro II connection methods:

1. Standalone Mode
2. Serial Printer Mode
3. Reverse Polarity Billing Machine Mode
4. PCO Machine Mode

The sections below describe each mode and the steps required to set up the Yap Jack Pro II. They also explain how to enable each mode on the device and configure its related settings.

### Standalone Mode

This mode applies when the Yap Jack Pro II will be used solely to make calls over the Internet and will not be connected to a receipt printer or billing machine. Refer to Figure 1 below for an illustration of the connections necessary to set up the Yap Jack Pro II for standalone mode.

#### ***Connecting the Yap Jack Pro II for Standalone Mode***

**To connect the Yap Jack Pro II for standalone mode:**

1. Connect the Yap Jack Pro II into the telephone jack on your wall.
  - a. Plug one end of an RJ-11 telephone cable into the **LINE** port on the back of the device.
  - b. Plug the other end of the telephone cable into a working telephone wall jack.
2. Connect your telephone into the Yap Jack Pro II by plugging the RJ-11 cable from your telephone into the **PHONE** port on the back of the device.
3. Power up the Yap Jack Pro II.
  - a. Plug the device's power supply into an AC outlet on your wall.
  - b. Plug the power cable into the **DC IN** port on the rear of the device.

The device powers-up immediately. You will hear three beeps, the lights will glow, and the display will read **Initializing Please Wait...** and then **Yap Jack Pro II \* Ready \***.

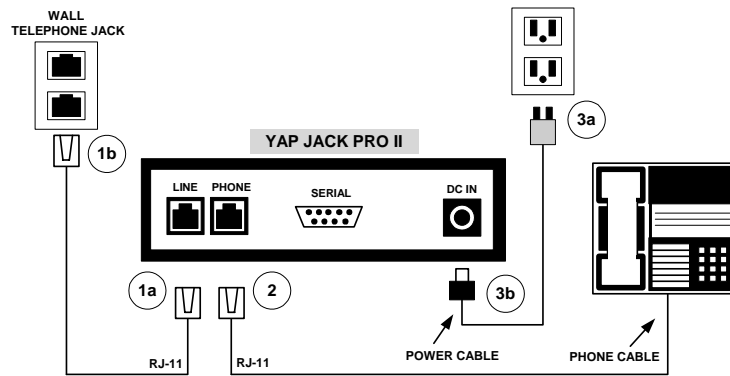


Figure 1 – Yap Jack Pro II Connections in Standalone Mode

### Setting the Yap Jack Pro II to Standalone Mode

By default, the Yap Jack Pro II is set in standalone mode.

To return to standalone mode from any of the other modes:

1. When **Yap Jack Pro II \* Ready \*** is displayed on the LCD, press the **Menu/Exit** button.
2. Using the down (↓) button, move to the **>Advanced Setup** menu option, and then select it by pressing the **OK** button.
3. Using the down (↓) button, move to the **>Billing Setup** menu option, and then select it by pressing the **OK** button.
4. Press the **OK** button to select the **>Hardware Setup** menu option.
5. Use the down (↓) or up (↑) buttons to display **None** and then select it by pressing the **OK** button.
6. Press the **Menu/Exit** button until the LCD displays **Yap Jack Pro II \* Ready \***.

To continue configuring the Yap Jack Pro II, refer to “Entering Account and ISP Information” on page 12.

### Serial Printer Mode

When the Yap Jack Pro II is in serial printer mode, it will send call detail to the attached serial printer, which will print a receipt after each call is completed. The receipt displays the date of the call, the telephone number called, the start and end times, and the total charge for the call. Refer to Figure 2 below for an illustration of the connections necessary to set up the Yap Jack Pro II for serial printer mode.

## Connecting the Yap Jack Pro II for Serial Printer Mode

To connect the Yap Jack Pro II for serial printer mode:

1. Connect the Yap Jack Pro II into the telephone jack on your wall.
  - a. Plug one end of an RJ-11 telephone cable into the **LINE** port on the back of the device.
  - b. Plug the other end of the telephone cable into a working telephone wall jack.
2. Connect your telephone into the Yap Jack Pro II by plugging the RJ-11 cable from your telephone into the **PHONE** port on the back of the device.
3. Connect the serial cable to a receipt printer and power up the printer.
  - a. Make sure the printer has the following settings:
    - o 9600 baud
    - o 8 bit
    - o 1 stop bit
    - o No parity



**NOTE: If you are using a printer that is non-configurable, please be sure that it uses the above settings.**

4. Power up the Yap Jack Pro II.
  - a. Plug the device's power supply into an AC wall outlet.
  - b. Plug the power cable into the **DC IN** port on the rear of the device.

The device powers-up immediately. You will hear three beeps, the lights will glow, and the display will read **Initializing Please Wait...** and then **Yap Jack Pro II \* Ready \***.

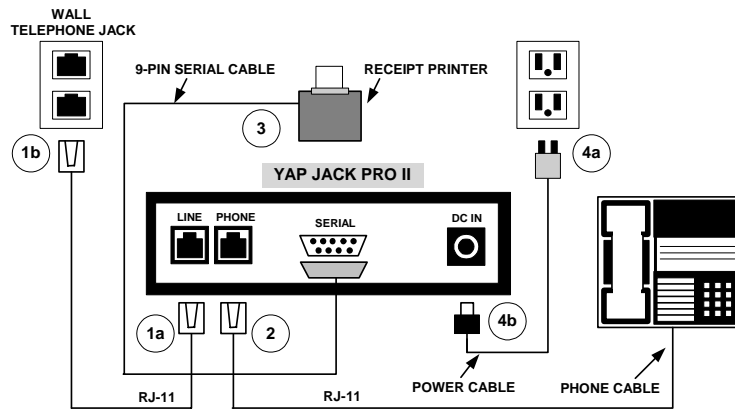


Figure 2 – Yap Jack Pro II Connections in Serial Printer Mode

## Setting the Yap Jack Pro II to Serial Printer Mode

To use the serial printer functionality of the Yap Jack Pro II, you must configure the following settings:

1. Set the serial printer mode.
2. Define the time zone.
3. Set the daylight savings time option.
4. Set the markup percentage.

### SERIAL PRINTER MODE

Since the Yap Jack Pro II is set to standalone mode by default, you must adjust the mode setting to use the serial printer mode.

#### To set serial printer mode:

1. When **Yap Jack Pro II \* Ready \*** is displayed on the LCD, press the **Menu/Exit** button.
2. Using the down (↓) button, move to the **>Advanced Setup** menu option, and then select it by pressing the **OK** button.
3. Using the down (↓) button, move to the **>Billing Setup** menu option, and then select it by pressing the **OK** button.
4. Press the **OK** button to select the **>Hardware Setup** menu option.
5. Using the down (↓) button, move to the **>Printer** menu option, and then select it by pressing the **OK** button.
6. Press the **Menu/Exit** button until the LCD displays **Yap Jack Pro II \* Ready \***.

### TIME ZONE

In order for the correct current local time to appear on the printed receipts, you must define the time zone.

#### To set your time zone:

1. When **Yap Jack Pro II \* Ready \*** is displayed on the LCD, press the **Menu/Exit** button.
2. Using the down (↓) button, move to the **>Advanced Setup** menu option, and then select it by pressing the **OK** button.
3. Using the down (↓) button, move to the **>Billing Setup** menu option, and then select it by pressing the **OK** button.
4. Using the down (↓) button, move to the **>Receipt Setup** menu option, and then select it by pressing the **OK** button.
5. Using the down (↓) button, move to the **>Time Settings** menu option, and then select it by pressing the **OK** button.
6. Press the **OK** button to select the **>Time Zone** menu option. *The **Time Zone** entry field displays.*

7. Pick up your telephone handset, and, using your telephone keypad, enter the number of hours that your Standard Time deviates from the Greenwich Mean Time (GMT). Use decimal fractions when necessary (i.e., 4.5 to represent 4 and ½ hours.)

To find out the number of hours that your Standard Time deviates from the GMT, visit <http://www.worldtimeserver.com/>. Find your country in the left frame and click it to view the current time. Underneath the current time and the date, you will see the amount of hours that your zone deviates from the GMT.

For example, the current time in New Jersey, United States reads, "DST -0400 UTC," which means that New Jersey is located 4 hours earlier than the GMT. Hong Kong reads, "Standard Time +0800 UTC," indicating that it is 8 hours later than the GMT.



**NOTE: The default time zone setting is 0, which is equal to the GMT time zone.**

If your local time is earlier than the GMT, you will enter a negative number (use a dash "-" before the number). If your local time is later than the GMT, just enter the number (in other words, there is no need to enter "+" before the number).

#### DAYLIGHT SAVINGS TIME

If your time zone is observing Daylight Savings Time (DST), or Summer Time, you can set the Yap Jack Pro II to adjust the time automatically. Changing the value of the DST field to **Yes** adjusts the time to be one hour later than Standard Time. If you are currently on Standard Time (from late autumn through early spring), you don't have to adjust this field, since the default is set to **No**.

##### To set the Daylight Savings Time option:

1. When **Yap Jack Pro II \* Ready \*** is displayed on the LCD, press the **Menu/Exit** button.
2. Using the down (▼) button, move to the **>Advanced Setup** menu option, and then select it by pressing the **OK** button.
3. Using the down (▼) button, move to the **>Billing Setup** menu option, and then select it by pressing the **OK** button.
4. Using the down (▼) button, move to the **>Receipt Setup** menu option, and then select it by pressing the **OK** button.
5. Using the down (▼) button, move to the **>Time Settings** menu option, and then select it by pressing the **OK** button.

6. Using the down (↓) button, move to the **>DST** menu option, and then select it by pressing the **OK** button.  
*The **DST** selection field displays.*
7. Press the right (→) button to display **Yes** and then select it by pressing the **OK** button.
8. Press the **Menu/Exit** button until the LCD displays **Yap Jack Pro II \* Ready \***.

### COMPANY NAME

By default, the receipt prints without a company name, but you can enter a name that you would like to appear at the top of each receipt.

#### To customize the company name on the receipt:

1. When **Yap Jack Pro II \* Ready \*** is displayed on the LCD, press the **Menu/Exit** button.
2. Using the down (↓) button, move to the **>Advanced Setup** menu option, and then select it by pressing the **OK** button.
3. Using the down (↓) button, move to the **>Billing Setup** menu option, and then select it by pressing the **OK** button.
4. Using the down (↓) button, move to the **>Receipt Setup** menu option, and then select it by pressing the **OK** button.
5. Press the **OK** button to select the **>Company** menu option.  
*The **Company** entry field displays.*
6. Pick up your telephone handset, and, using your telephone keypad, enter the company name you would like to appear on the printed receipts.



**NOTE:** For instructions on how to enter text using your telephone keypad, refer to the Telephone Keypad Map on page 20 of this Quick Start Guide.



**NOTE:** You can enter a maximum of 16 characters and spaces in each text field.

7. To save your entry, press the **OK** button.
8. Press the **Menu/Exit** button until the LCD displays **Yap Jack Pro II \* Ready \***, and hang up your telephone handset.  
*The company name will display at the top of all printed receipts.*

### MARKUP PERCENTAGE

The Yap Jack Pro II allows you to enter the markup percentage for calls made through the device. Using this percentage, the device calculates the actual cost of the call plus the markup you are charging the caller for the use of the device, resulting in the total cost of the call to the caller. When the receipt prints, the total charge displayed includes the markup.

**To enter your markup percentage:**

1. When **Yap Jack Pro II \* Ready \*** is displayed on the LCD, press the **Menu/Exit** button.
2. Using the down (▼) button, move to the **>Advanced Setup** menu option, and then select it by pressing the **OK** button.
3. Using the down (▼) button, move to the **> Billing Setup** menu option, and then select it by pressing the **OK** button.
4. Using the down (▼) button, move to the **>Markup %** menu option, and then select it by pressing the **OK** button.  
*The Markup % entry field displays.*
5. Pick up your telephone handset, and, using your telephone keypad, enter the number of the markup percentage you would like to charge callers who use the device.



**NOTE: Keep in mind that the number entered in this field is a percentage, not a dollar amount. For example, if you enter 10 as the markup percentage (for ten percent) and the call costs you \$2.00, the total charge to the caller will be \$2.20: \$2.00 + (\$2.00 \* .10).**

To continue configuring the Yap Jack Pro II, refer to "Entering Account and ISP Information" on page 12.

### Reverse Polarity Billing Machine Mode

This mode should be used when the Yap Jack Pro II will be connected to a billing machine that uses reverse polarity to determine the start and end of a call. The billing machine receives a "reverse polarity signal" from the Yap Jack Pro II that indicates that the call has started (and will start billing) and when it ends (and will stop billing). Refer to Figure 3 below for an illustration of the connections necessary to set up the Yap Jack Pro II for reverse polarity billing machine mode.



**NOTE: When using a reverse polarity billing machine, confirm that all the settings on the machine are correct. Refer to your billing machine documentation for more information.**

### Connecting the Yap Jack Pro II for Reverse Polarity Mode

To connect the Yap Jack Pro II for reverse polarity mode:

1. Connect the Yap Jack Pro II into the telephone jack on your wall.
  - a. Plug one end of an RJ-11 telephone cable into the **LINE** port on the back of the device.
  - b. Plug the other end of the telephone cable into a working telephone wall jack.

2. Connect your telephone to the reverse polarity billing machine by plugging the RJ-11 cable from your telephone into the **Phone** port on the billing machine.
3. Connect the reverse polarity billing machine to the Yap Jack Pro II.
  - a. Plug one end of a RJ-11 cable into the **LINE** port on the reverse polarity billing machine.
  - b. Plug the other end of the RJ-11 cable into the **PHONE** port on the Yap Jack Pro II.
4. Power up the Yap Jack Pro II.
  - a. Plug the device's power supply into an AC outlet on your wall.
  - b. Plug the power cable into the **DC IN** port on the rear of the device.

The device powers-up immediately. You will hear three beeps, the lights will glow, and the display will read **Initializing Please Wait...** and then **Yap Jack Pro II \* Ready \***.

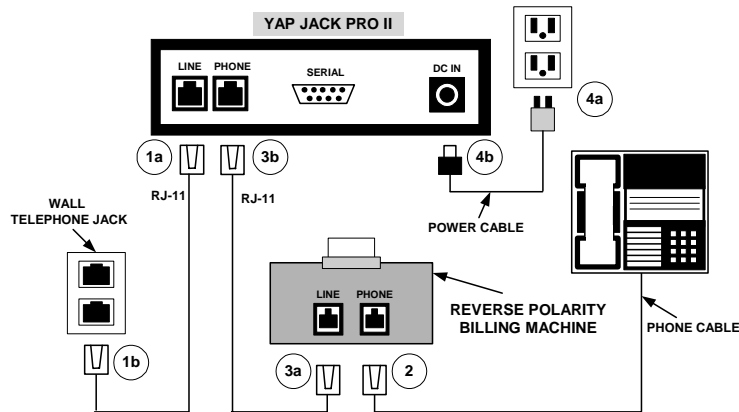


Figure 3 – Yap Jack Pro II Connections in Reverse Polarity Mode

### Setting the Yap Jack Pro II to Reverse Polarity Mode

To use the reverse polarity functionality of the Yap Jack Pro II, you must first set the device to use the reverse polarity mode.

Since the Yap Jack Pro II is set to standalone mode by default, you must adjust the mode setting to use the reverse polarity mode.

**To set reverse polarity mode:**

1. When **Yap Jack Pro II \* Ready \*** is displayed on the LCD, press the **Menu/Exit** button.
2. Using the down (↓) button, move to the **>Advanced Setup** menu option, and then select it by pressing the **OK** button.
3. Using the down (↓) button, move to the **>Billing Setup** menu option, and then select it by pressing the **OK** button.
4. Press the **OK** button to select the **>Hardware Setup** menu option.
5. Using the down (↓) button, move to the **>Reverse Polarity** menu option, and then select it by pressing the **OK** button.

*The Yap Jack Pro II is now set to send a "reverse polarity signal" to the billing machine at the start of the call and another one at the end of the call.*

6. Press the **Menu/Exit** button until the LCD displays **Yap Jack Pro II \* Ready \***.

To continue configuring the Yap Jack Pro II, refer to "Entering Account and ISP Information" on page 12.

## **PCO Machine Mode**

This mode applies when the Yap Jack Pro II will be connected to a PCO (Public Calling Office) machine, which collects billing tones to determine the length and cost of a call. The Yap Jack Pro II calculates the amount of time between billing tones based on the destination called and the markup percentage, and then tones the PCO machine appropriately. When the call is complete, the PCO machine prints a receipt displaying the resulting cost. Refer to Figure 4 below for an illustration of the connections necessary to set up the Yap Jack Pro II for PCO machine mode.

### **Connecting the Yap Jack Pro II for PCO Machine Mode**

**To connect the Yap Jack Pro II to PCO machine mode:**

1. Connect the Yap Jack Pro II into the telephone jack on your wall.
  - a. Plug one end of an RJ-11 telephone cable into the **LINE** port on the back of the device.
  - b. Plug the other end of the telephone cable into a working telephone wall jack.
2. Connect your telephone to the PCO machine by plugging the RJ-11 cable from your telephone into the **PHONE** port on the PCO machine.
3. Connect the PCO/billing machine to the Yap Jack Pro II.

- a. Plug one end of a RJ-11 cable into the **LINE** port on the PCO machine.
  - b. Plug the other end of the RJ-11 cable into the **PHONE** port on the Yap Jack Pro II.
4. Power up the Yap Jack Pro II.
    - a. Plug the device's power supply into an AC outlet on your wall.
    - b. Plug the power cable into the **DC IN** port on the rear of the device.

The device powers-up immediately. You will hear three beeps, the lights will glow, and the display will read **Initializing Please Wait...** and then **Yap Jack Pro II \* Ready \***.

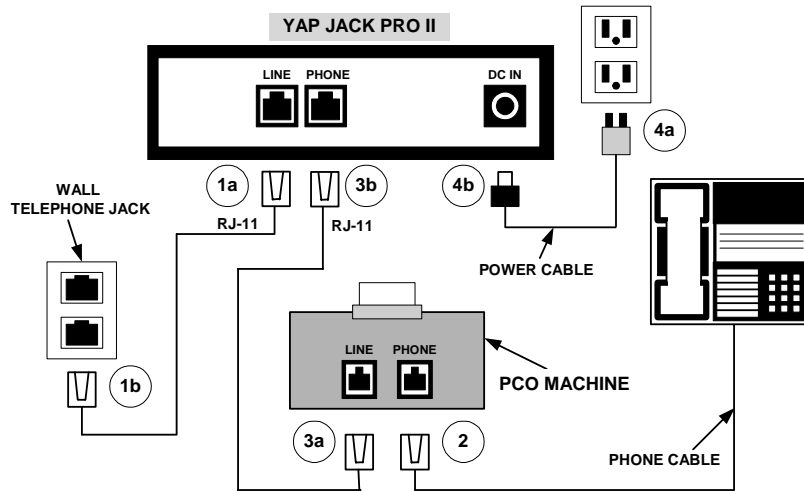


Figure 4 – Yap Jack Pro II Connections in PCO Machine Mode

Now that you have set up the Yap Jack Pro II to use a PCO machine, you must set the device to use the PCO machine mode. For instructions, refer to “Setting PCO Machine Mode” on page 11.

### Setting the Yap Jack Pro II to PCO Machine Mode

To use the PCO machine functionality of the Yap Jack Pro II, you must configure the following settings.

1. Set the PCO machine mode.
2. Set the markup percentage.
3. Set the Price per Tone (PPT).

For detailed instructions on how to set the Yap Jack Pro II to use PCO machine mode, refer to the [Yap Jack Pro II Version 1.0 User's Guide](http://web.net2phone.com/partnerships/distributors/product/dialup/yapjackpro2.asp), located at the following URL:  
<http://web.net2phone.com/partnerships/distributors/product/dialup/yapjackpro2.asp>.

Once the PCO machine mode is set and the accompanying settings are configured, continue to the section titled “Entering Account and ISP Information” below for additional configuration instructions.

## Entering Account and ISP Information

Now that you’ve got the Yap Jack Pro II set up and set to the desired mode, you will need to configure the device with your Yap Jack Pro II account and ISP information so that you can place calls. If you do not have a Yap Jack Pro II account, please contact your local distributor.

If you try to place a call before the information has been entered, the device will perform a check, and if any information is missing, you will be prompted to enter each field one at a time.

Please have all account information ready and be prepared to enter the:

- ★ Yap Jack Pro II account number
- ★ Yap Jack Pro II personal identification number (PIN)
- ★ ISP access telephone numbers for primary and/or backup ISPs
- ★ ISP user name (only if required by your primary and/or secondary ISP)
- ★ ISP password (only if required by your primary and/or secondary ISP)

If your device has been pre-configured with account information, then you can skip to the “Checking Advanced Setup Configuration” section later in this guide.



**NOTE:** All information entered on your telephone keypad is displayed on the Yap Jack Pro II LCD screen. Please check the LCD as you enter information.



**TIP:** Press the \* key on your telephone keypad to back up and delete any character entered.

## Entering Account Information

To enter your account information:

1. When **Yap Jack Pro II \* Ready \*** is displayed on the LCD, press the **Menu/Exit** button.
2. Select the **>Basic Setup** menu option by pressing the **OK** button.
3. Using the down (▼) button, move to the **>Account Config** menu option, and select it by pressing the **OK** button.

4. Select **>Account Number** by pressing the **OK** button.  
*The **Account Number** entry field displays.*
5. Pick up your telephone handset, and, using your telephone keypad, enter your Yap Jack Pro II account number.
6. To save your entry, press the **OK** button.
7. Using the down (▼) button, select **>PIN** and press **OK**.  
*The **PIN** entry field displays.*
8. Using your telephone keypad, enter the PIN associated with your account number.
9. To save your entry, press the **OK** button.

## Entering ISP Information

### To enter your ISP information:

1. Press the **Menu/Exit** button once to return to the Basic Setup menu.
2. Using the down (▼) button, move to the **>ISP Config** menu option, and select it by pressing the **OK** button.
3. Select **>Primary ISP** by pressing the **OK** button.
4. Select **>ISP Phone Num.** by pressing the **OK** button.  
*The **ISP Phone Num.** entry field displays.*
5. Using your telephone keypad, enter your primary ISP's access telephone number.



**TIP:** If you are required to enter a prefix, such as "9," before accessing an outside line, refer to *Using a Dialing Prefix* on page 15 of this Quick Start Guide.

6. To save your entry, press the **OK** button.
7. If your primary ISP does not require a user name and password, skip to step 14.  
OR  
If your primary ISP requires a user name, then select **>ISP User Name** by pressing the down (▼) button and then pressing **OK**.  
*The **ISP User Name** entry field displays.*
8. Using your telephone keypad, enter the user name for your ISP account.



**TIP:** For instructions on how to enter text using your telephone keypad, refer to the *Telephone Keypad Map* on page 20 of this Quick Start Guide.

9. To save your entry, press the **OK** button.

10. If your primary ISP requires a password, then select **>ISP Password** by pressing the down (↓) button and then pressing **OK**.  
*The ISP Password entry field displays.*
11. Using your telephone keypad, enter your password.
12. To save your entry, press the **OK** button.
13. If you would like to enter backup ISP information, continue with step 14.  
OR  
If you do not want to enter backup ISP information, press the **Menu/Exit** button four times to exit, and hang up your telephone handset.  
*Yap Jack Pro II \* Ready \* displays on the LCD.*
14. Press the **Menu/Exit** button once to return to the ISP Config menu.
15. Using the down (↓) button, select **>Backup ISP** and press the **OK** button.
16. Select **>ISP Phone Num.** by pressing the **OK** button.  
*The ISP Phone Num. entry field displays.*
17. Using your telephone keypad, enter your primary ISP's access telephone number.
18. To save your entry, press the **OK** button.
19. If your backup ISP does not require a user name and password, skip to step 25.  
OR  
If your backup ISP requires a user name, then select **>ISP User Name** by pressing the down (↓) button and then pressing **OK**.  
*The ISP User Name entry field displays.*
20. Using your telephone keypad, enter the user name for your ISP account.
21. To save your entry, press the **OK** button.
22. If your backup ISP requires a password, then select **>ISP Password** by pressing the down (↓) button and then pressing **OK**.  
*The ISP Password entry field displays.*
23. Using your telephone keypad, enter your password.
24. To save your entry, press the **OK** button.
25. Press the **Menu/Exit** button until the LCD displays **Yap Jack Pro II \* Ready \***, and hang up your telephone handset.

## Checking Advanced Setup Information

Before placing your first call, please enter or check the following information located in the Advanced Setup menu:

- ★ **Dialing prefix**—enables you to set the dialing prefix required to access an outside line, if necessary.
- ★ **Call waiting**—enables you to block the call waiting feature if your telephone line is set up to notify you of incoming calls during another call.
- ★ **Dialing mode**—enables you to select your telephone dialing mode—tone or pulse.

### Using a Dialing Prefix

If your phone line requires you to dial a prefix to access an outside line (for example, some business phones require that you dial a “9” to access an outside line), you can designate that prefix by following these steps.

To specify the use of a dialing prefix:

1. When **Yap Jack Pro II \* Ready \*** is displayed on the LCD, press the **Menu/Exit** button.
2. Select the **>Basic Setup** menu option by pressing the **OK** button.
3. Using the down (▼) button, move to the **>ISP Config** menu option and press the **OK** button.
4. Using the down (▼) button, move to the **>Use Dial Prefix** menu option and press the **OK** button.  
*The Use Dial Prefix entry field displays.*
5. Press the down (▼) button to select **In Use**.
6. To save your entry, press the **OK** button.



**NOTE:** The default dialing prefix is “9,” (the comma inserts a pause before dialing the ISP’s number). If this is the prefix you want to use, you can skip the following steps, since it is already set as the default.

7. Using the down (▼) button, move to the **>Dialing Prefix** menu option and press the **OK** button.  
*The Dialing Prefix entry field displays.*
8. Using your telephone keypad, enter the desired prefix.
9. To save your entry, press the **OK** button.
10. Press the **Menu/Exit** button until the LCD displays **Yap Jack Pro II \* Ready \***, and hang up your telephone handset.

## Disabling Call Waiting

If you have call waiting on your telephone line, then you must configure your Yap Jack Pro II to block call waiting every time you place a call to your ISP. Otherwise, if a call comes in on the line while your call is in progress, your Yap Jack Pro II call will disconnect.

### To disable call waiting:

1. When **Yap Jack Pro II \* Ready \*** is displayed on the LCD, press the **Menu/Exit** button.
2. Using the down (▼) button, move to the **>Advanced Setup** menu option, and press the **OK** button.
3. Using the down (▼) button, move to the **>Device Setup** menu option, and press the **OK** button.
4. Using the down (▼) button, move to the **>Call Waiting** menu option, and then press the **OK** button.  
*The **Call Waiting** entry field displays.*
5. Select **In Use** by pressing the up (▲) button.
6. To save your entry, press the **OK** button.
7. Now, you must enter the block code to disable call waiting. Using the down (▼) button, move to the **>C-W Block Code** menu option, and then press the **OK** button.  
*The **C-W Block Code** entry field displays.*
8. Using your telephone keypad, enter the code to block the call waiting feature. If you don't know the code, contact your local telephone company.
9. To save your entry, press the **OK** button.
10. Press the **Menu/Exit** button until the LCD displays **Yap Jack Pro II \* Ready \***, and hang up your telephone handset.

## Changing Your Telephone Dialing Mode

If your telephone dialing mode is Tone (touch-tone), then skip to "**Setting Receipt Options**" below. If your telephone dialing mode is Pulse (rotary), then you must change the default setting from Tone to Pulse.

### To change your telephone dialing mode to Tone:

1. When **Yap Jack Pro II \* Ready \*** is displayed on the LCD, press the **Menu/Exit** button.
2. Using the down (▼) button, move to the **>Advanced Setup** menu option, and press the **OK** button.
3. Using the down (▼) button, move to the **>Device Setup** menu option, and press the **OK** button.

4. Using the down (▼) button, move to the **>Dialing Mode** menu option, and press the **OK** button.  
*The **Dialing Mode** selection field displays.*
5. Use the down (▲) button to display **Pulse**.
6. To save your entry, press the **OK** button.
7. Press the **Menu/Exit** button until the LCD displays **Yap Jack Pro II \* Ready \***, and hang up your telephone handset.

All necessary settings are now complete, and you are ready to place your first call.

## Placing a Test Call

Although not required, it is recommended that you place a test call to a local number to confirm that the Yap Jack Pro II can successfully connect to the ISP and that the receipt printing feature is functioning properly.

To place a test call, simply follow the instructions in the "Making a Telephone Call" section below.

## Making a Telephone Call

### Placing a Call to a Regular Telephone

To make a call:

1. Pick up your telephone handset, and listen for a dial tone.
2. Press the **@** button on your Yap Jack Pro II.  
*You will hear a dial tone.*
3. Using your telephone keypad, dial the number of the person you want to call.

**TIP:**

- \* For all domestic calls within the US, dial 1 + area code + 7-digit telephone number.
- \* If you are calling from outside the US, dial 011 + country code + city code + telephone number.
- \* For international calls placed from the US, dial 011 + country code + city code + telephone number.
- \* If you are calling from outside the US, dial 011 + country code + city code + telephone number.





**NOTE:** If you need to delete a previously entered number, you can back up and delete it by pressing the ← button.

*You will hear "Please hold while your call is being connected." The LCD will display "Dialing ISP 1/3." Then, after a few seconds, your Yap Jack Pro II will place the call through your ISP. This process will take some time, depending on how long it takes to reach and connect to your ISP.*

*Once the Yap Jack Pro II is connected to the ISP, it will place the call to the phone number you dialed. The LCD will display "Contacting Party" while the phone is ringing and until the destination party picks up the phone.*



**NOTE:** You can check the status of your call by watching the LCD display and listening to the device. You will hear two beeps when the device is logging onto the ISP and two more beeps when the device is connected to the ISP.



**NOTE:** To mute the call, press the @ button. To disable the mute function, press @ again.

4. When you have finished with your call, simply hang up your telephone handset.  
*Yap Jack Pro II \* Ready \* displays on the LCD. If you are using a serial printer or PCO machine, a receipt prints. If you are using a reverse polarity billing machine, it indicates that the call is over. The receipt displays the date, the number called, the start and end times, and the total charge of the call.*
5. To place another call, pick up your telephone handset, and repeat the steps above.



**NOTE:** If you are placing calls from outside the United States, the masked dialing feature will enable you to insert the international dialing prefix for the country you are in so that when you make an outgoing call, you will not need to dial the US prefix of "011." For instructions on how to use this feature, refer to the *Using Masked Dialing* section in Chapter 5 of the *Yap Jack Pro II Version 2.0.0 User's Guide* for instructions.

If the receipt does not print, check to make sure the printer settings match those in **Setting up Your Yap Jack Pro II**, earlier in this chapter. If all settings are correct, verify that the serial cable is connected securely and that the printer is powered on.

## Telephone Keypad Map

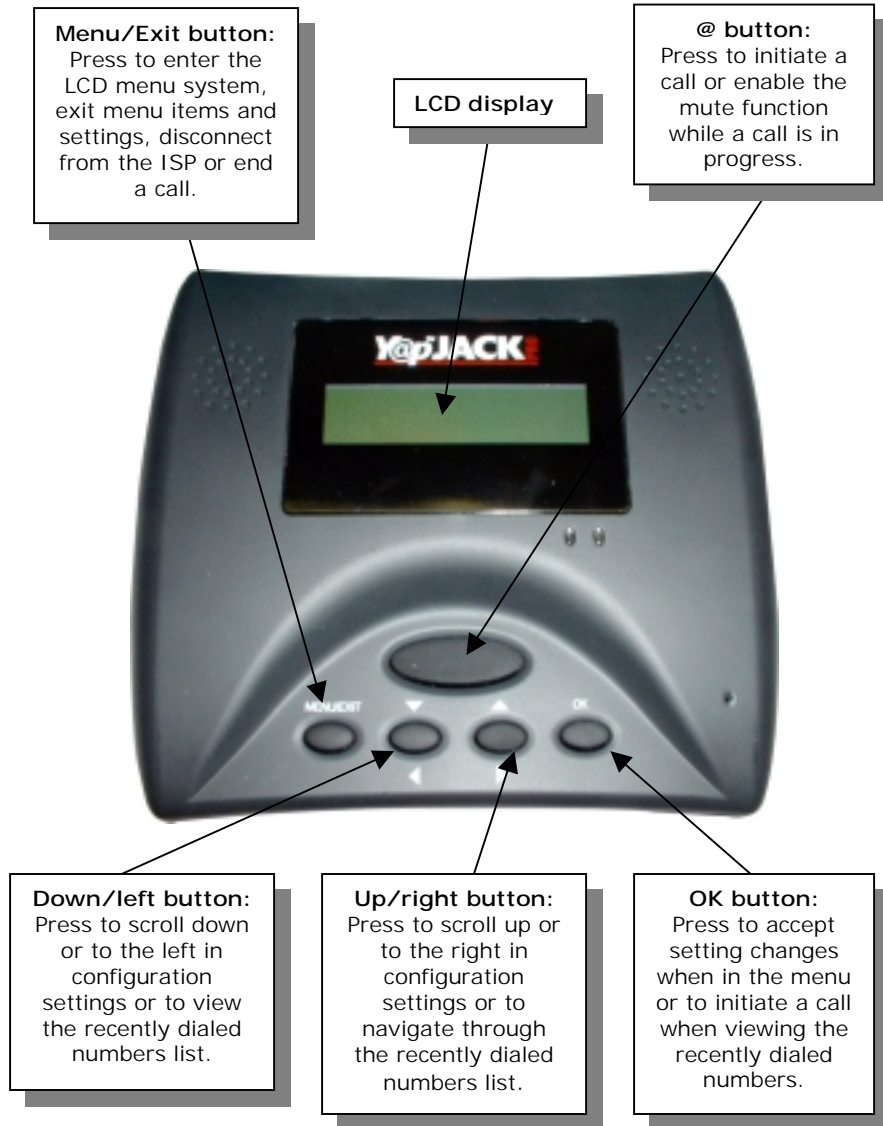
Use the following chart to help you determine which key to press and how many times to get a particular character or letter.

Examples: To enter the @ sign, press the 1 key twice. To enter a capital G, press the 4 key five times.

	1	2	3	4	5	6	7	8	9	10
	1	@	.	_	#	-	*	/	\	\$
	11	12	13	14	15	16	17	18	19	20
1	&	space	+	=	(	)		`	%	^
	21	22	23	24	25	26	27	28	29	30
	[	]	{	}	~	,	?	:	;	'
	31	32								
	>	<								
2	2	a	b	c	A	B	C			
3	3	d	e	f	D	E	F			
4	4	g	h	i	G	H	I			
5	5	j	k	l	J	K	L			
6	6	m	n	o	M	N	O			
7	7	p	q	r	s	P	Q	R	S	
8	8	t	u	v	T	U	V			
9	9	w	x	y	z	W	X	Y	Z	
0	0									



## Yap Jack Pro II Interface



All Rights Reserved.

The use, disclosure, modification, transfer or transmittal of this work for any purpose, in any form, or by any means, without the written permission from Net2Phone is strictly forbidden.

Yap Jack Pro II  
Rev. 2.0.0, 2003

#### Disclaimer

The content of this manual is subject to change without notice and should not be construed as a commitment by the distributor or Net2Phone. This manual is furnished for informational use only and Net2Phone assumes no responsibility or liability for any errors or inaccuracies that may appear herein.

Any Net2Phone services provided through this Equipment are not intended to replace or be a substitute for primary line voice services or Plain Old Telephone Service ("POTS") and are not meant to provide guaranteed Automatic Number Identification or Automatic Location Information capabilities associated with 911 or E911 services or to permit access to 411 directory assistance services. Net2Phone will not be liable for any damages, expenses, liabilities, risks, or harms arising out of or related to the Net2Phone services provided through this Equipment.